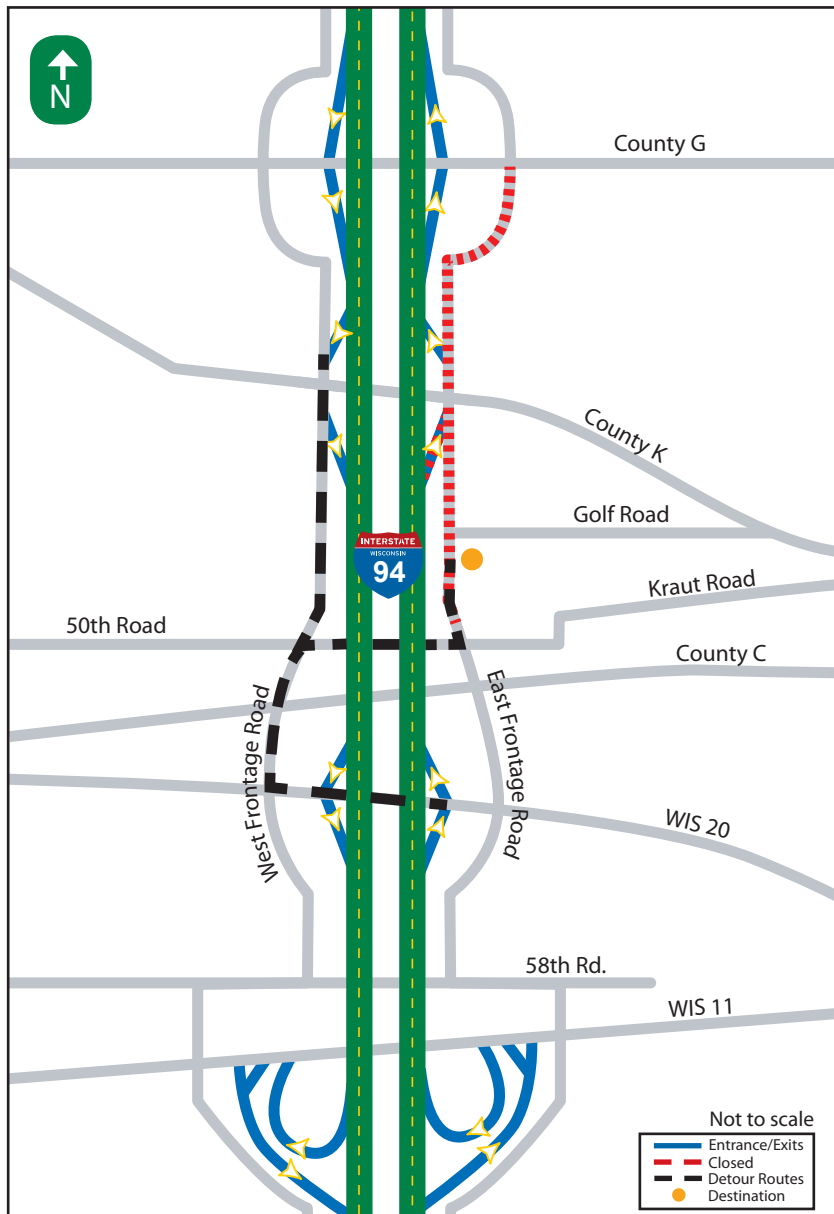


DIRECTIONS

Mid-April to Mid-May



Sturtevant Auto Salvage

2145 Northeast Frontage Rd
Sturtevant, WI
(262) 835-2914
sturtevantauto.com



94 NORTH-SOUTH
FREEWAY PROJECT



U.S. Department of Transportation
Federal Highway Administration

FROM THE NORTH: Take I-94 EAST(SB) to County K/Northwestern Avenue. Exit at County K/Northwestern Avenue and follow the West Frontage Road (south) to Kraut Road. Turn left (east) onto Kraut Road, followed by a left (north) onto the East Frontage Road. Follow the East Frontage Road (north) to Sturtevant Auto Salvage.

TO THE NORTH: Take the East Frontage Road (south) to Kraut Road. Turn right (west) onto Kraut Road, followed by a left (south) onto the West Frontage Road. Follow the West Frontage Road (south) to WIS 20. Turn left (east) onto WIS 20 followed by a left onto I-94 WEST (NB).

FROM THE SOUTH: Take I-94 WEST (NB) to WIS 20. Exit at WIS 20 and turn left (west) onto WIS 20, followed by a right (north) onto the West Frontage Road. Follow the West Frontage Road (north) to Kraut Road. Turn right (east) onto Kraut Road, followed by a left (north) onto the East Frontage Road. Follow the East Frontage Road (north) to Sturtevant Auto Salvage.

TO THE SOUTH: Take the East Frontage Road (south) to Kraut Road. Turn right (west) onto Kraut Road, followed by a left (south) onto the West Frontage Road. Follow the West Frontage Road (south) to WIS 20. Turn left (east) onto WIS 20 followed by a right onto I-94 EAST (SB).